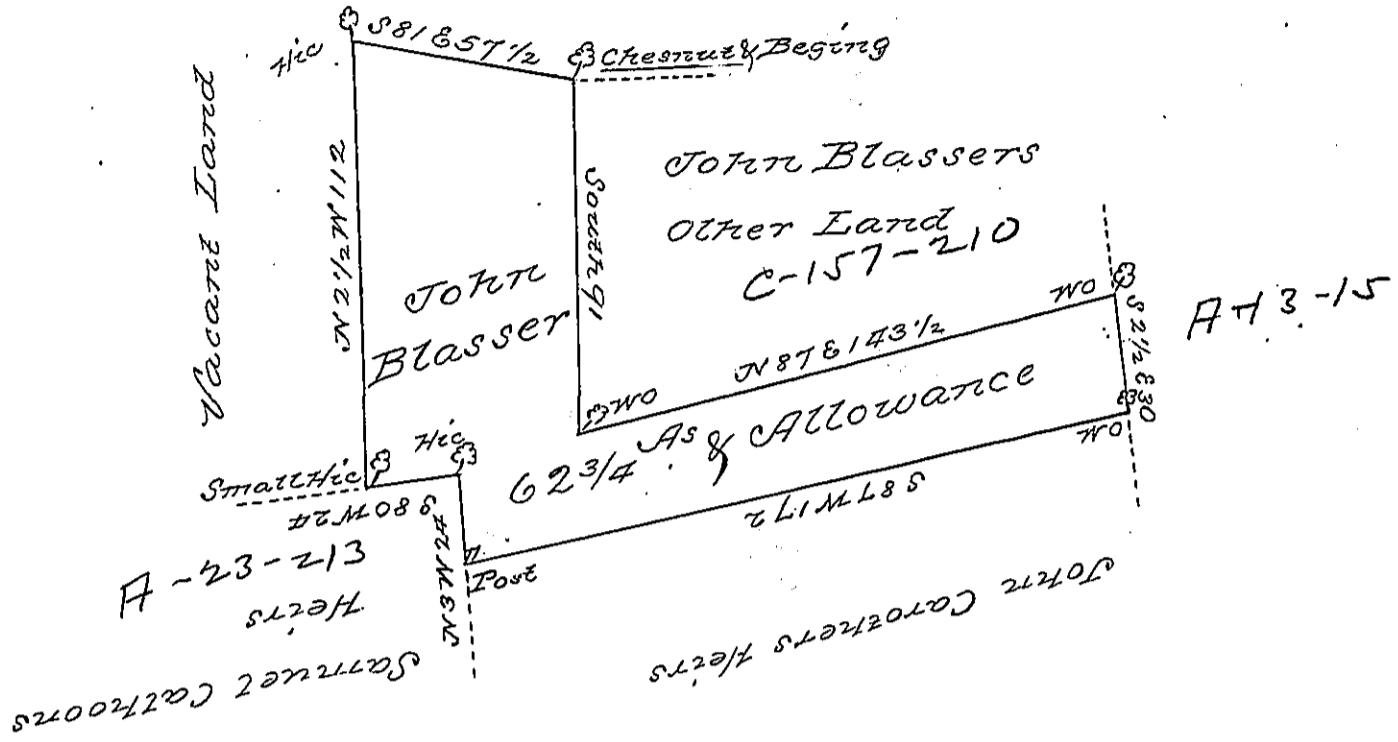


By foot of the North Mountain



The Draught of a Tract of Land Situate in East Pennsborough Township Cumberland County Containing Sixty two Acres and three fourths of an Acre and allowance of Six percent for Roads &c. Surveyed for John Blasser the 16<sup>th</sup> Day of February, 1787 in Pursuance of a Warrant from the Supreme Executive Council of the Commonwealth of Pennsylvania bearing date at Philada. the 9<sup>th</sup> Day of May 1786

To John Lukens Esq. }  
 Surveyor General }  
 J. H. Saml. Lyon D. S.

IN TESTIMONY that the above is a copy of the original remaining on file in the Department of Internal Affairs of Pennsylvania, made conformably to an Act of Assembly approved the 16th day of February, 1833, I have hereunto set my Hand and caused the Seal of said Department to be affixed at Harrisburg, this Fifth day of October 1897

James W. Latta  
 Secretary of Internal Affairs.